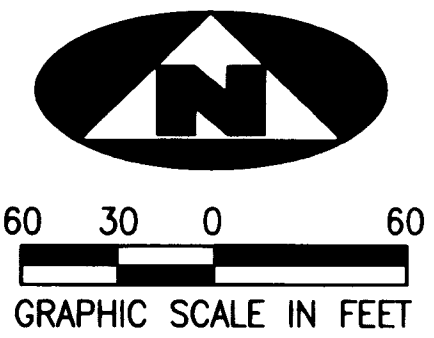


BEING A REPLAT OF A PORTION OF SECTIONS 14 AND 15, TOWNSHIP 38 SOUTH, RANGE 40 EAST, PALM CITY FARMS, RECORDED IN PLAT BOOK 6, PAGE 42, PUBLIC RECORDS PALM BEACH COUNTY (NOW MARTIN COUNTY), FLORIDA, AND BEING A PART OF SECTIONS 10 AND 11, TOWNSHIP 38 SOUTH, RANGE 40 EAST, MARTIN COUNTY, FLORIDA

N89°59'13"E 2457.67'

NOT PLATTED

N89°59'55"E 2649.15'



PLAT BK 16 Pg 39

FOR MATCH SEE SHEET 33 OF 36

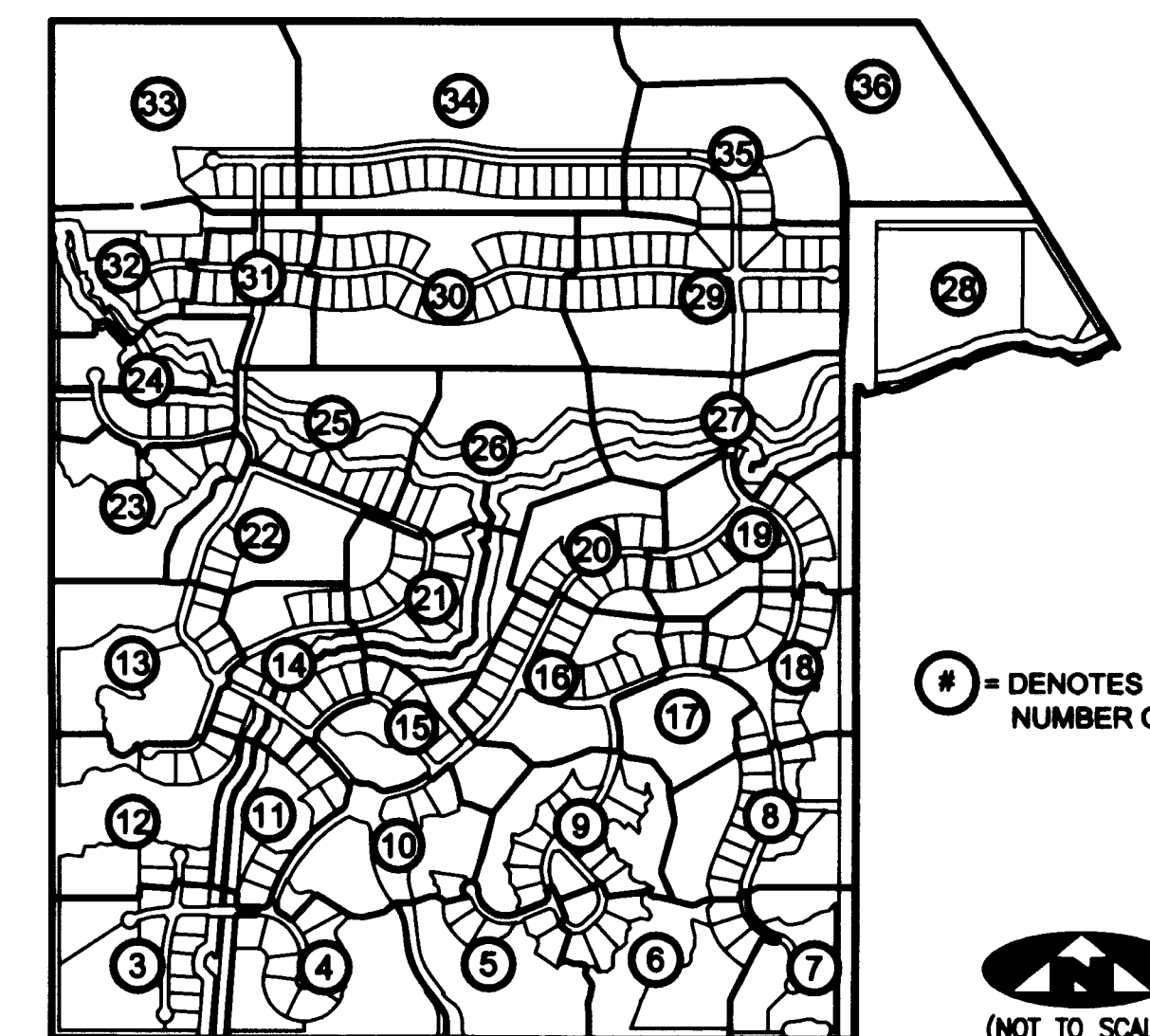
FOR MATCH SEE SHEET 36 OF 36

TRACT "MC"

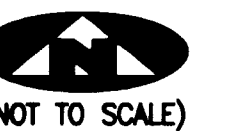
CURVE TABLE

Table with 4 columns: Curve ID, CA, R, L, LCB, W, CHD. Lists curves C278 through C287 with their respective geometric data.

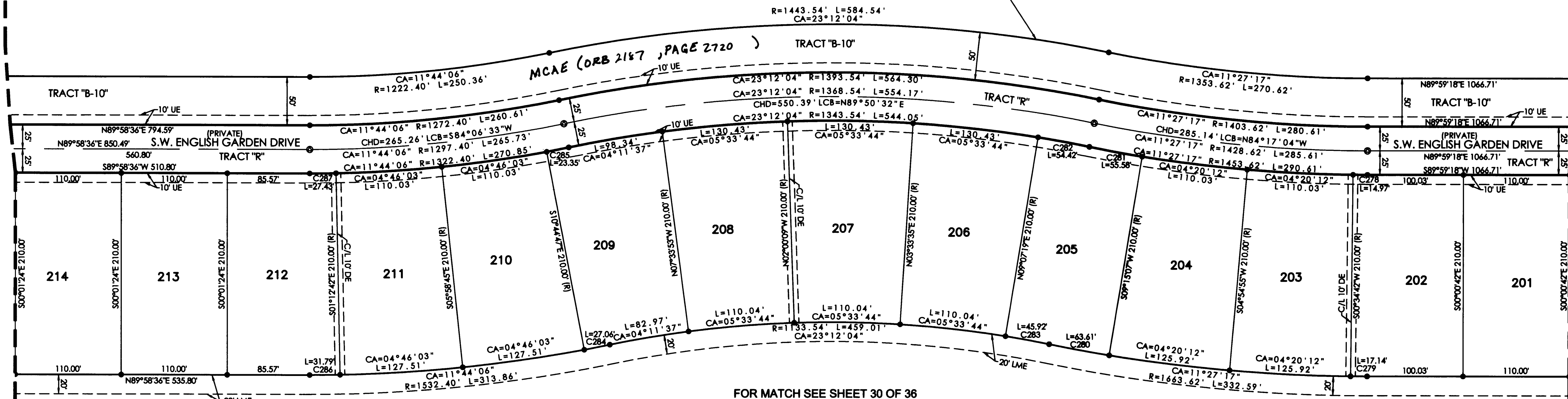
SHEET INDEX



4 = DENOTES SHEET NUMBER OF 36



FOR MATCH SEE SHEET 33 OF 36



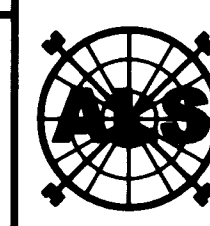
FOR MATCH SEE SHEET 35 OF 36

LEGEND

Legend table with 4 columns defining symbols for radial lines, centerlines, easements, monuments, and control points.

SURVEYOR'S NOTES

- 1. THE BASE BEARING, AS SHOWN HEREON, IS N89°58'48"W ALONG THE SOUTHLINE OF THE SOUTHWEST ONE-QUARTER OF SECTION 15, TOWNSHIP 38 SOUTH, RANGE 40 EAST.
2. IN THOSE INSTANCES WHERE UTILITY OR DRAINAGE STRUCTURES ARE CONSTRUCTED IN CONFLICT WITH THE PLATTED PERMANENT CONTROL POINT POSITION STRADDLERS MONUMENTED AS PERMANENT CONTROL POINTS WILL BE SET TO REFERENCE THE PLATTED POSITION.
3. LINES THAT INTERSECT CURVES ARE RADIAL UNLESS OTHERWISE NOTED.
4. THIS INSTRUMENT WAS PREPARED BY WM. R. VAN CAMPEN, PROFESSIONAL SURVEYOR AND MAPPER NO. 2424, IN AND FOR THE OFFICES OF ASSOCIATED LAND SURVEYORS, INC., 4152 WEST BLUE HERON BOULEVARD, SUITE 121, RIVIERA BEACH, FLORIDA, 33404



ASSOCIATED LAND SURVEYORS, INC. 4152 W. BLUE HERON BOULEVARD-SUITE 121 RIVIERA BEACH FLORIDA 33404 LB 7344 PHONE: (561) 848-2102 FAX: (561) 844-9859 EMAIL: ALLSURVEY@AOL.COM

FILE: P280PLAT

Table with 2 columns: FB (Scale: 1"=80'), WO.NO. (P280), DATE (1/8/2005), SHEET (34 OF 36).